



CATALOGUE

YOUR LIGHTS OUR POWER...YOUR SAFETY OUR WARRANTY

A vertical index on the left side of the page, consisting of seven colored bars of varying heights. From top to bottom, the bars are: red, green, yellow, orange, blue, and magenta. Each bar has a white circle at its base containing a page number. To the right of each bar is the corresponding page title. The titles are: ABOUT US (6), MISSION (8), LED LIGHTING AND DECORATION (10), VIDEO SURVAILLANCE (15), WALL MONITOR (25), and NEW PRODUCTS (35).

6	ABOUT US
8	MISSION
10	LED LIGHTING AND DECORATION
15	VIDEO SURVAILLANCE
25	WALL MONITOR
35	NEW PRODUCTS

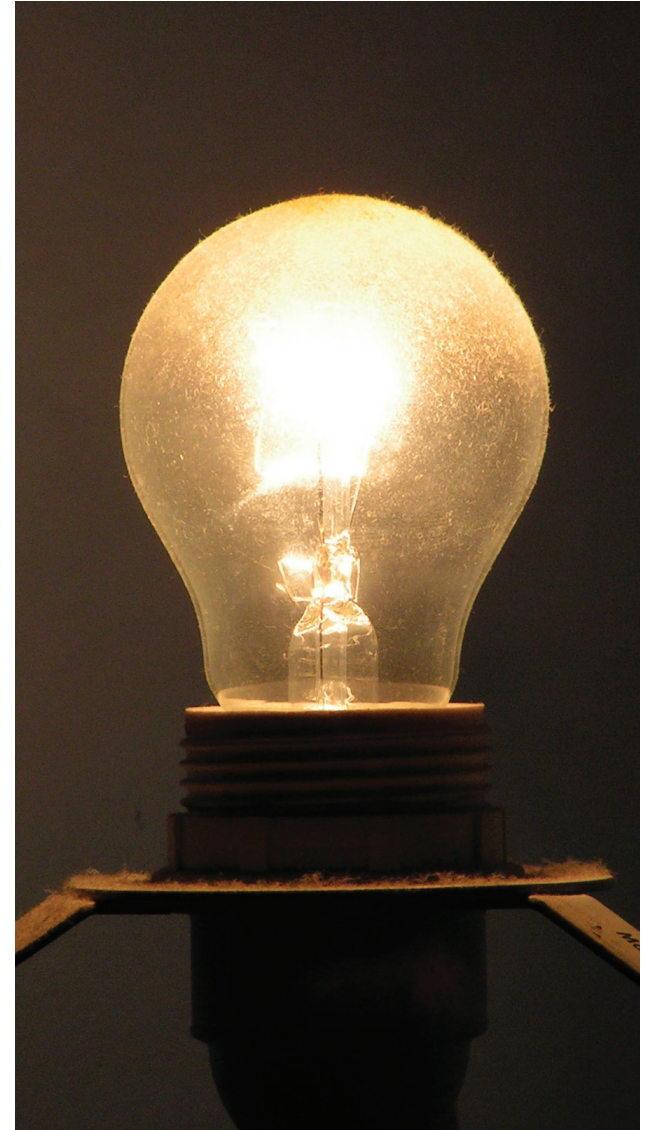
ABOUT US

Teco Trading is a modern company of latest generation, created by several experts in the industry, interested in sharing their knowledge and expertise to the trade world, in order to pledge first class performance and services.

A dense international network and business partnerships, allow Teco Trading to offer answers and innovative products of unquestionable excellence.

Thanks to constant investments in the research and growth of new technologies, Teco Trading is able to create personalized proposals that guarantee high level standards, valuable performances and products. We are involved in different aspects and offer various solutions, such as the lighting of interiors or exteriors, the safety of public and private places, or the use of new technologies not yet sold in the market.

Moreover, competence and expertise allow us to guide the client through every phase of the technical and graphic design, the production, installation and to the everyday assistance.



MISSION

YOUR LIGHTS OUR
POWER
YOUR safety OUR
warranty

...this is our claim and our philosophy.

Innovation, excellence and expertise, our traits...
our mission is to satisfy our clients needs...

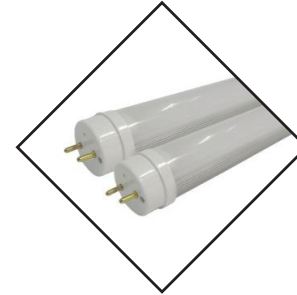


LED LIGHTING AND DECORATION



TUB/39
T8 150cm Series

Dimension	L1500*Φ26mm
Voltage	AC 85-265V
Power	28W
Cover type	Transparent
Cct	5700-6100K
Cri	75
Angle	120°
Led type	3528
Led qty	288pcs
Lumens	2500lm



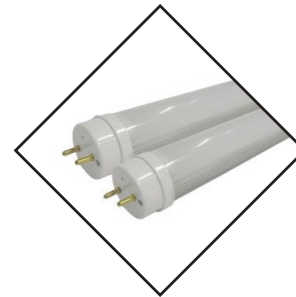
TUB/40
T8 150cm Series

Dimension	L1500*Φ26mm
Voltage	AC 85-265V
Power	28W
Cover type	Milk white
Cct	2800-3200K
Cri	75
Angle	120°
Led type	3528
Led qty	288pcs
Lumens	2200lm



TUB/41
T8 150cm Series

Dimension	L1500*Φ26mm
Voltage	AC 85-265V
Power	28W
Cover type	Milk white
Cct	4000-4500K
Cri	75
Angle	120°
Led type	3528
Led qty	288pcs
Lumens	2300lm



TUB/42
T8 150cm Series

Dimension	L1500*Φ26mm
Voltage	AC 85-265V
Power	28W
Cover type	Milk white
Cct	5700-6100K
Cri	75
Angle	120°
Led type	3528
Led qty	288pcs
Lumens	2300lm



TUB/43
T8 240cm Series

Dimension	L1500*Φ26mm
Voltage	AC 110-277V
Power	36W
Cover type	Transparent
Cct	2800-3200K
Cri	75
Angle	120°
Led type	3528
Led qty	384
Lumens	3200lm



TUB/44
T8 240cm Series

Dimension	L1500*Φ26mm
Voltage	AC 110-277V
Power	36W
Cover type	Transparent
Cct	4000-4500K
Cri	75
Angle	120°
Led type	3528
Led qty	384
Lumens	3400lm



TUB/45
T8 240cm Series

Dimension	L1500*Φ26mm
Voltage	AC 110-277V
Power	36W
Cover type	Transparent
Cct	5700-6100K
Cri	75
Angle	120°
Led type	3528
Led qty	384
Lumens	3400lm



TUB/46
T8 240cm Series

Dimension	L1500*Φ26mm
Voltage	AC 110-277V
Power	36W
Cover type	Milk white
Cct	2800-3200K
Cri	75
Angle	120°
Led type	3528
Led qty	384
Lumens	3100lm



TUB/25
T8 120cm Series

Dimension L1200*Φ26mm
Voltage AC 110-277V
Power 20W
Cover type Transparent
Cct 2800-3200K
Cri 75
Angle 120°
Led type 3528
Led qty 216pcs
Lumens 1700lm



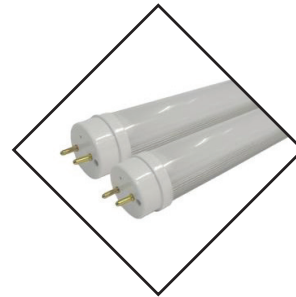
TUB/28
T8 120cm Series

Dimension L1200*Φ26mm
Voltage AC110-277V
Power 20W
Cover type Milk white
Cct 2800-3200K
Cri 75
Angle 120°
Led type 3528
Led qty 216pcs
Lumens 1600lm



TUB/31
T8 120cm Series

Dimension L1200*Φ26mm
Voltage AC 85-265V
Power 25W
Cover type Trasparent
Cct 2800-3200K
Cri 75
Angle 120°
Led type 3528
Led qty 252pcs
Lumens 2150lm



TUB/34
T8 120cm Series

Dimension L1200*Φ26mm
Voltage AC 85-265V
Power 25W
Cover type Milk white
Cct 2800-3200K
Cri 75
Angle 120°
Led type 3528
Led qty 252pcs
Lumens 2100lm



TUB/10
T8 60cm Series

Dimension	L600*Φ26mm
Voltage	AC 110-277V
Power	9W
Cover type	Milk white
Cct	2800-3200K
Cri	75
Angle	120°
Led type	3528
Led qty	108pcs
Lumens	720lm



TUB/13
T8 60cm Series

Dimension	L600*Φ26mm
Voltage	AC 110-277V
Power	12W
Cover type	Transparent
Cct	2800-3200K
Cri	75
Angle	120°
Led type	3528
Led qty	120pcs
Lumens	1000lm



TUB/19
T8 120cm Series

Dimension	L1200*Φ26mm
Voltage	AC 110-277V
Power	18W
Cover type	Transparent
Cct	2800-3200K
Cri	75
Angle	120°
Led type	3528
Led qty	192pcs
Lumens	1600lm



TUB/16
T8 60cm Series

Dimension	L600*Φ26mm
Voltage	AC 110-277V
Power	12W
Cover type	Milk white
Cct	2800-3200K
Cri	75
Angle	120°
Led type	3528
Led qty	120pcs
Lumens	980lm



TUB/47
T8 240cm Series

Dimension L1500*Φ26mm
Voltage AC 110-277V
Power 36W
Cover type Milk white
Cct 4000-4500K
Cri 75
Angle 120°
Led type 3528
Led qty 384
Lumens 3300lm



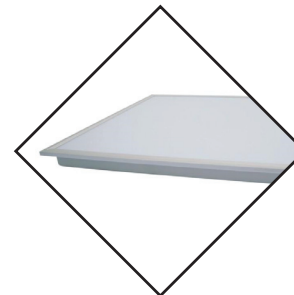
TUB/48
T8 240cm Series

Dimension L1500*Φ26mm
Voltage AC 110-277V
Power 36W
Cover type Milk white
Cct 5700-6100K
Cri 75
Angle 120°
Led type 3528
Led qty 384
Lumens 3300lm



TUB/37
T8 150cm Series

Dimension L1500*Φ26mm
Voltage AC 85-265V
Power 28W
Cover type Trasparent
Cct 2800-3200K
Cri 75
Angle 120°
Led type 3528
Led qty 288pcs
Lumens 2400lm



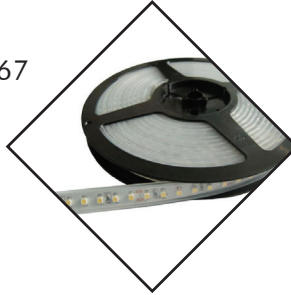
PAN/01
40W LED PANEL LIGHT

Dimension 600*600*45 mm
Power 40W
Lumen 3800lm
C/t 2700-3000K
Cri 80Ra
Angle 150°
Volt. AC85-265V
Dimm. NO



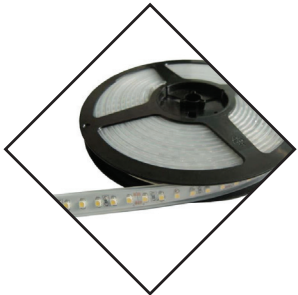
STR/37
SMD3528, 60 LED/M; DC 12V

Color RED
Ip rating Silica Tube Encased IP67
Power 4.8W
Pcb width 8/10mm
Lumen/m 90-130LM



STR/38
SMD3528, 60 LED/M; DC 12V

Color YELLOW
Ip rating Silica Tube Encased IP67
Power 4.8W
Pcb width 8/10mm
Lumen/m 90-130LM



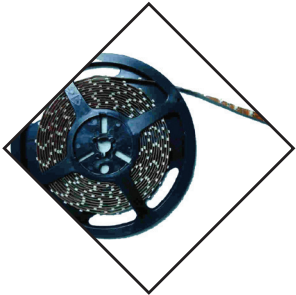
STR/39
SMD3528, 60 LED/M; DC 12V

Color BLUE
Ip rating Silica Tube Encased IP67
Power 4.8W
Pcb width 8/10mm
Lumen/m 40-64LM



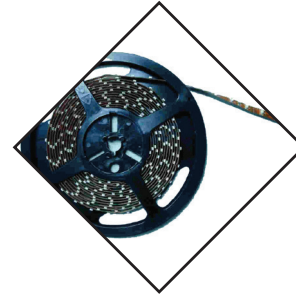
STR/40
SMD3528, 60 LED/M; DC 12V

Color GREEN
Ip rating Silica Tube Encased IP67
Power 4.8W
Pcb width 8/10mm
Lumen/m 130-180LM



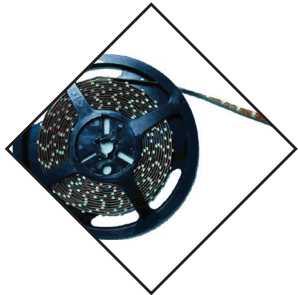
STR/81
SMD3528, 240 LED/M; DC 12V

Color BLUE
Ip rating Silica Gel Covered IP65
Power 19.2W
Pcb width 12mm
Lumen/m 160-256LM



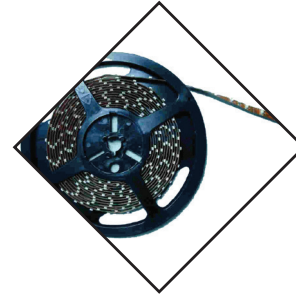
STR/82
SMD3528, 240 LED/M; DC 12V

Color GREEN
Ip rating Silica Gel Covered IP65
Power 19.2W
Pcb width 12mm
Lumen/m 520-720LM



STR/83
SMD3528, 240 LED/M; DC 12V

Color WHITE
Ip rating Silica Gel Covered IP65
Power 19.2W
Pcb width 12mm
Lumen/m 1200-1320LM



STR/84
SMD3528, 60 LED/M; DC 12V

Color RGB
Ip rating Silica Gel Covered IP65
Power 19.2W
Pcb width 12mm
Lumen/m 1040-1200LM



STR/96
SMD3528, 240 LED/M; DC 12V

Color RGB
Ip rating Silica Tube Encased and Filled with Silica Gel IP68
Power 19.2W
Pcb width 12mm
Lumen/m 1040-1200LM



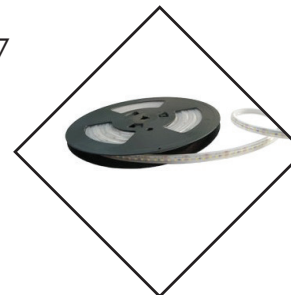
STR/90
SMD3528, 240 LED/M; DC 12V

Color RGB
Ip rating Silica Tube Encased IP67
Power 19.2W
Pcb width 12mm
Lumen/m 1040-1200LM



STR/95
SMD3528, 240 LED/M; DC 12V

Color WHITE
Ip rating Silica Tube Encased and Filled with Silica Gel IP68
Power 19.2W
Pcb width 12mm
Lumen/m 1200-1320LM



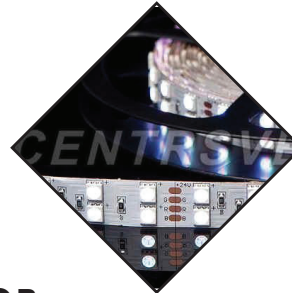
STR/89
SMD3528, 240 LED/M; DC 12V

Color WHITE
Ip rating Silica Tube Encased IP67
Power 19.2W
Pcb width 12mm
Lumen/m 1040-1200LM



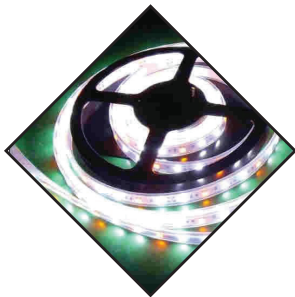
CT_BT-5050FX60-24RGB
SMD5050, 120LED/M; DC 12V

Color RGB
Ip rating Non-waterproof
Power 28.8W
Pcb width 18mm
Lumen/m 1600-1720LM



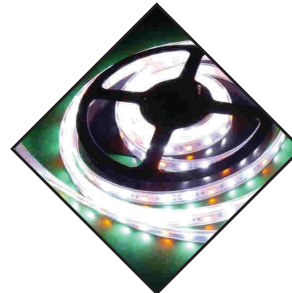
CT_BT-5050FX60-24W
SMD5050, 120LED/M; DC 12V

Color WHITE
Ip rating Non-waterproof
Power 28.8W
Pcb width 12mm
Lumen/m 1800-1920LM



CT_BT-5050FXWP30J-12RGB
SMD5050, 60LED/M; DC 12V

Color RGB
Ip rating Silica Tube Encased and Filled with Silica Gel IP68
Power 14.4W
Pcb width 10mm
Lumen/m 800-860LM



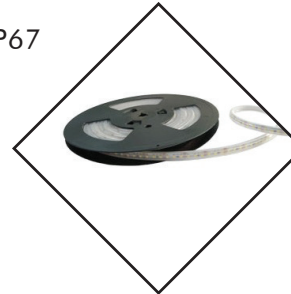
CT_BT-5050FXWP30J-12W
SMD5050, 60LED/M; DC 12V

Color WHITE
Ip rating Silica Tube Encased and Filled with Silica Gel IP68
Power 14.4W
Pcb width 10mm
Lumen/m 900-960LM



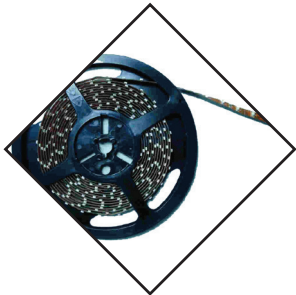
CT_BT-5050FXWP30-12RGB
SMD5050, 60LED/M; DC 12V

Color RGB
Ip rating Silica Tube Encased IP67
Power 14.4W
Pcb width 10mm
Lumen/m 800-860LM



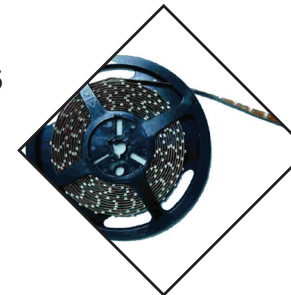
CT_BT-5050FXWP30-12W
SMD5050, 60LED/M; DC 12V

Color WHITE
Ip rating Silica Tube Encased IP67
Power 14.4W
Pcb width 10mm
Lumen/m 900-960LM



CT_BT-5050FX30J-12RGB
SMD5050, 60LED/M; DC 12V

Color RGB
Ip rating Silica Gel Covered IP65
Power 14.4W
Pcb width 10mm
Lumen/m 800-860LM



CT_BT-5050FX30J-12WW
SMD5050, 60LED/M; DC 12V

Color WHITE
Ip rating Silica Gel Covered IP65
Power 14.4W
Pcb width 10mm
Lumen/m 900-960LM



SPOT/29
4.5W SPOTLIGHT WITH 430lm

Dimension $\Phi 50 \times 52 \text{mm}$
Power 5W
Lumen 400lm
C/t 2700-3000K
Cri 80Ra
Angle 30°/60°
Volt. AC/DC 12V
Base MR16
Dimm. NO



SPOT/25
4.5W SPOTLIGHT WITH 430lm

Dimension $\Phi 50 \times 57 \text{mm}$
Power 5W
Lumen 430lm
C/t 2700-3000K
Cri 80Ra
Angle 30°/60°
Volt. AC230V
Base GU10
Dimm. NO



SPOT/21
3.6W SPOTLIGHT WITH 500lm

Dimension $\Phi 50 \times 52 \text{mm}$
Power 6W
Lumen 480lm
C/t 2700-3000K
Cri 80Ra
Angle 30°/60°
Volt. AC/DC 12V
Base MR16
Dimm. NO



SPOT/17
3.6W SPOTLIGHT WITH 500lm

Dimension $\Phi 50 \times 57 \text{mm}$
Power 6W
Lumen 500lm
C/t 2700-3000K
Cri 80Ra
Angle 30°/60°
Volt. AC230V
Base GU10
Dimm. NO

SPOTLIGHT



**COB/56
5W CANDLE BULB**

Dimension Φ37*110mm
Power 5W
Cri 80Ra
Angle 300°
Volt. AC220V
Base E14
Dimm. YES



**COB/51
5W CANDLE BULB**

Dimension Φ37*110mm
Power 5W
Lumen 400lm
C/t 2700-3000K
Cri 80Ra
Angle 300°
Volt. AC220V
Base E14
Dimm. NO



**COB/45
5W FLOWER BULB**

Dimension Φ58*110mm
Power 5W
Lumen 400lm
C/t 2700-3000K
Cri 80Ra
Angle 300°
Volt. AC220V
Base E27
Dimm. NO



**COB/41
12W CORN LAMP**

Dimension Φ50*120mm
Power 12W
Lumen 1200lm
C/t 2700-3000K
Cri 80Ra
Angle 360°
Volt. AC 85-265V
Base E27
Dimm. NO



SPOT/13
2.6W SPOTLIGHT WITH 550lm

Dimension	Φ50*52mm
Power	6W
Lumen	500lm
C/t	2700-3000K
Cri	80Ra
Angle	30°/60°
Volt.	AC/DC12V
Base	MR16
Dimm.	NO



SPOT/05
1.7W SPOTLIGHT WITH 600lm

Dimension	Φ50*57mm
Power	7W
Lumen	550lm
C/t	2700-3000K
Cri	80Ra
Angle	15°/30°/60°
Volt.	AC/DC12V
Base	MR16
Dimm.	NO



SPOT/01
1.7W SPOTLIGHT WITH 600lm

Dimension	Φ50*66mm
Power	7W
Lumen	600lm
C/t	2700-3000K
Cri	80Ra
Angle	15°/30°/60°
Volt.	AC230V
Base	GU10
Dimm.	NO



**COB/29
9W DLS SERIES**

Dimension $\Phi 63 \times 117 \text{mm}$
Power 9W
Lumen 800lm
C/t 2700-3000K
Cri 80Ra
Angle 150°
Volt. AC85-265V
Base E27
Dimm. NO



**COB/21
7W DLS SERIES**

Dimension $\Phi 63 \times 117 \text{mm}$
Power 7W
Lumen 600lm
C/t 2700-3000K
Cri 80Ra
Angle 150°
Volt. AC 85-265V
Base E27
Dimm. NO



**COB/33
12W DLS SERIES**

Dimension $\Phi 63 \times 125 \text{mm}$
Power 12W
Lumen 1000lm
C/t 2700-3000K
Cri 80Ra
Angle 150°
Volt. AC85-265V
Base E27
Dimm. NO



**COB/25
9W R80 SERIES**

Dimension $\Phi 78 \times 110 \text{mm}$
Power 9W
Lumen 800lm
C/t 2700-3000K
Cri 80Ra
Angle 150°
Volt. AC 85-265V
Base E27
Dimm. NO



**PAR/18
LED PARLIGHT**

Dimension	Φ70*75mm
Power	7W
Led type	1 pc COB
Lumen	650lm
C/t	5800-6200K
Cri	80Ra
Angle	30°/60°
Volt.	AC220V
Base	E27/GU10
Dimm.	YES
Equivalent	60W=



**PAR/12
LED PARLIGHT**

Dimension	Φ95*133mm
Power	10W
Led type	1 pc COB
Lumen	900lm
C/t	5800-6200K
Cri	80Ra
Angle	30°/60°
Volt.	AC220V
Base	E27
Dimm.	YES
Equivalent	75W=



**PAR/06
LED PARLIGHT**

Dimension	Φ120*130mm
Power	16W
Led type	1 pc COB
Lumen	1300lm
C/t	5800-6200K
Cri	80Ra
Angle	30°/60°
Volt.	AC85-265V
Base	E27
Dimm.	YES
Equivalent	100W=

PARLIGHT

VIDEO SURVEILLANCE



**TEST/08
CCTV TESTER**

Details
Li-Battery can support

3.5 inch LCD
12 hours 12. DC 12V



**BDC/302
1/4 CMOS 600 TVL IR CUT**

Details

24x5EA 20m
Color CCD/
Waterproof Vandal
Dome/24 PCS ϕ 5 IR
LEDs/20 meters IR
distance /3.6 mm
lens/Aluminum Hou
MTV-3.6mm 6mm 8mm

Lens option



**DVR/17
16 CH D1 realtime Recording/16 CH Audio/ HDMI/
Support 4*SATA HDD & DVD-RW/2 U housing**

Dimensions

430*70*360mm



BRA/140

1/3 SONY SUPER HAD II 650 TVL/OSD /256X SENSE UP/DWDR/3D-DNR/MOTION

Details

Vari-Focus
-1/3 SONY Super
HAD CCD /4 inch
New Design Dome/
3D bracket inside /
3.5~8 mm Manual
Iris lens/ DC12V

Lens option

3.5~8mm, 2.8~12mm manual iris lens

Color option

3.5~8mm, 2.8~12mm manual iris lens



BRA/168

1/3 SONY SUPER HAD II 420 TVL

Details

20x5EA 20m
Vandal-proof IR
Dome/1/3 SONY
Super HAD CCD/20
PCS ϕ 5 IR LEDs /20
meters IR distance/
4~9 mm Vari-Fo

Color option

WHITE/BLACK

**BRA/64****1/3 SONY 960H LOW ILLUMINATION CCD/ 700 TVL EFFIO-E /DWDR, DNR/OSD****Details**

42X5EA 20m
 Waterproof IP66/1/3
 SONY Super HAD
 CCD/vari-focus lens
 Externally adjust
 Zoom/Focus on
 bottom by han

Lens option

4~9mm, 2.8~12mm

**BRA/59****1/3 SONY SUPER HAD II 600TVL/OSD/ NEXTCHIP 2040 DSP****Details**

50 meter IR ARRAY
 Waterproof IP66/2* Gen III IR Array/Color 0 Lux/8mm
 Mega pixels IR lens /30 meters IR distance/cable

Lens option

Waterproof IP66/2* Gen III IR Array/Color 0 Lux/8mm
 Mega pixels IR lens /30 meters IR distance/cable

Color option

Waterproof IP66/2* Gen III IR Array/Color 0 Lux/8mm
 Mega pixels IR lens /30 meters IR distance/cable

WALL MONITOR



Kio/06

Screen size 65inch
Resolution 1920X1080



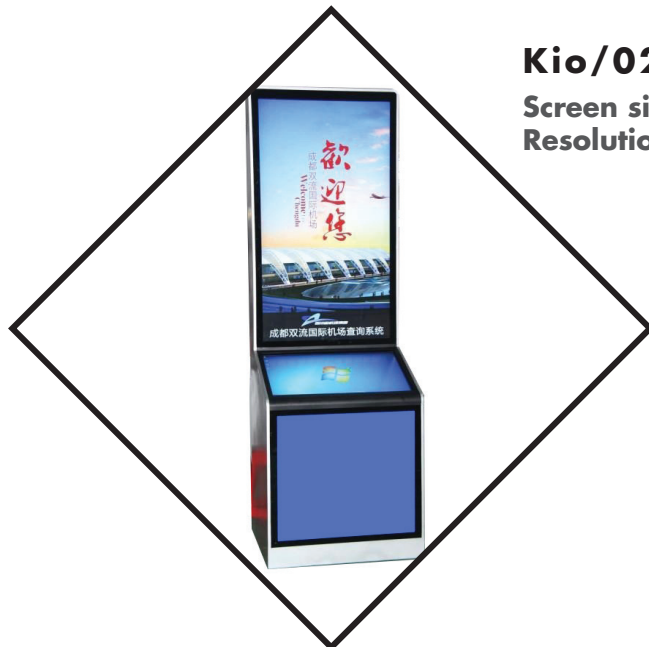
Kio/10

Screen size 55inch
Resolution 1920X1080



Kio/16

Screen size 55inch
Resolution 1920X1080



Kio/02

Screen size 32inch
Resolution 1920X1080



Kio/04

Screen size 42inch
Resolution 1920X1080



Kio/19

Screen size 55inch
Resolution 1920X1080



Kio/13

Screen size 55inch
Resolution 1920X1080

NEW PRODUCTS



AS/05

Voltage 230V-/50Hz
Power 2300W
Current 10.5A
Blowing 31 m/s



AS/04

Rated power 2500W
Wind speed 30 m/s
Temperature of hot airflow 45-58 degrees
Protection degree IPX



AS/21

Volts 4.5VDC
Dimensions (mm) 110Wx275Hx106D
Capacity 800 cc
Weight 1.0kg unpacked ; 1.3kg packed
Warranty ONE-YEAR



AS/01

Voltage 230V-/50Hz
Power 2300W
Current 10.5A
Blowing 31m/s



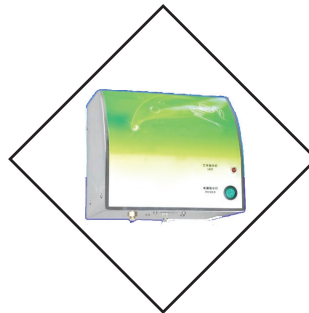
AS/22

Volts 4.5VDC
Dimensions 110 mm (W) x 275 mm (H) x 106 mm (D)
Capacity 800 cc
Weight 1.0kg unpacked ; 1.3kg packed
Material Stainless Steel
Warranty ONE-YEAR



AS/23

Volts 4.5VDC
Dimensions 110 mm (W) x 270 mm (H) x 115 mm (D)
Capacity 800 cc
Weight 0.7kg unpacked ; 1.0kg packed
Warranty ONE-YEAR



AS/25

Voltage AC200-240V, 50/60Hz
Power Less than 25W
Working Temperature 5-40 Degree
Spray volume per second 0.6-0.8ml/s
Induction distance 8-13cm
Dimensions (mm) 220(L)x185(W)x380(H)
Net Weight .3kg;
Gross Weight 4.0Kg;
Material Stainless steel

**AS/09**

Voltage
Dimensions (mm)
Air velocity
Air blowing
Estimated drying time

AC220-240 50/60Hz
 687Hx2200Wx300D
 85 m/s (low); 95 m/s (high)
 125 (m3/h)
 5-7 seconds

**AS/10**

Voltage
Dimensions (mm)
Air velocity
Air blowing
Rated power
Motor power
Power of heating element
Estimated drying time

AC220-240 50/60Hz
 670Hx330Wx219D
 100 m/s
 136 (m3/h)
 1000W-1300W
 450W-750W
 550W
 6 seconds

**AS/11**

Voltage
Dimensions (mm)
Air velocity
Air blowing
Rated power
Motor power
Power of heating element
Estimated drying time

AC220-240 50/60Hz
 670Hx300Wx219D
 100 m/s
 136 (m3/h)
 1000W-1300W
 450W-750W
 550W
 6 seconds

TOWELS



AS/18

Material
Power
Drying time
Blowing
Maximum airflow
Safty device

Terms of control
Dimension (mm)
Packing (mm)

Fireproof ABS;
 AC220V-240V 50Hz/60Hz;
 7-10seconds
 100m/s
 360km/h;
 overheating protection,over-current protection,
 short-circuit protection
 microcomputer control
 470H*250W*165D;
 540L*480W*630H



AS/16

Volts
Related Power
Dimensions (mm)
Current
Air speed
Maximum airflow
Inductive zone
Air temperature
Protection
Packing (mm)

AC110V/220V-240V (50Hz/60Hz)
 1450W
 293Wx163Dx320H
 6.5A (220V) / 12.7A (110V)
 100M/S
 320km/h
 50-120MM
 >54 degree
 Class II
 350*450*390cm/2pcs



www.tecotrading.com
info@tecotrading.com

CONTACTS